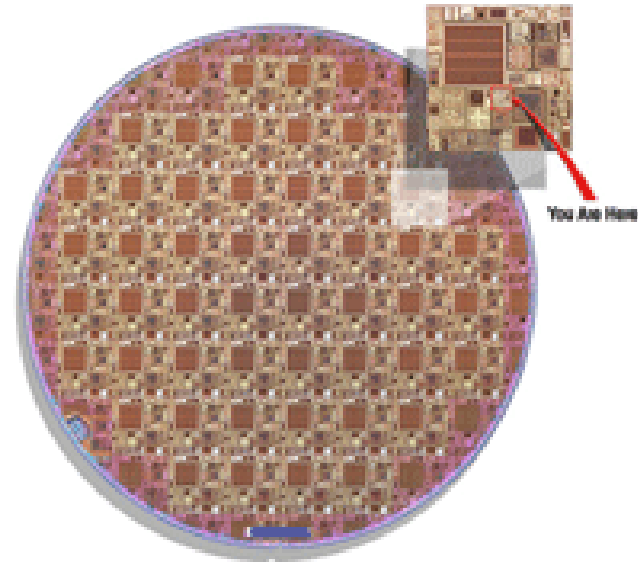


MULTI-PROJECT WAFER (MPW) ORGANIZATIONS

MOSIS

- Low-cost VLSI prototyping and small-volume production service
- Affiliated with Information Sciences Institute at USC in Marina del Rey, California
- Since 1981, they have fabricated more than 50,000 circuit designs for commercial firms, government agencies, and research and educational institutions
- Traditionally has been best place for support of magic and design rules
 - Changing somewhat recently
- MOSIS wrote magic's design rules



CMP

- Since 1981, CMP has been a non profit Multi-Project Wafer (MPW) service organization in ICs, Si-Photonics, 3D-ICs and MEMS, Smart Power, for prototyping and low volume production.
- CMP: Circuits Multi-Projects
- Located in Grenoble, France



FOR INTEGRATED CIRCUITS (IC):

ams	STMicroelectronics
0.18 μm CMOS C18A6	28 nm CMOS028 FDSOI
0.18 μm CMOS High Voltage H18A6	55 nm BiCMOS055
0.35 μm CMOS C35B4C3	65 nm CMOS065 CMOS 7LM
0.35 μm CMOS-Opto C35B4O1	130 nm HCMOS9GP CMOS 6LM
0.35 μm CMOS RF C35B4M3	130 nm H9SOI-FEM
0.35 μm SiGe BiCMOS S35D4M5	130 nm BiCMOS9MW SiGe BiCMOS 6LM
0.35 μm CMOS High Voltage H35B4D3	130 nm HCMOS9A High Voltage

FOR MICRO ELECTRO MECHANICAL SYSTEMS (MEMS):

MEMSCAP
3.0 μm PiezoMUMPS

CMP

- A total of 265 circuits have been fabricated for 90 Institutions, Research Laboratories and Companies from 25 countries.
- The nominal turnaround time, from the closing date of the run to the delivery of packaged chips was:
 - CMOS 11 weeks
 - HV CMOS 12 weeks
 - SiGe BiCMOS 14 weeks
 - Advanced CMOS 16 - 24 weeks
- Including 1-2 weeks of data preparation and 2-3 weeks wafer dicing and packaging.
- <https://mycmp.fr/>



Muse Semiconductor

- Muse Semiconductor is a relatively-new semiconductor company focused on providing MPW services to university researchers.
- MUSE is an acronym for MPW University Service
- Located in San Jose, CA and Denver, Colorado
- They offer TSMC exclusively
 - 180 nm
 - 65 nm
 - 40 nm
 - 28 nm
- <https://www.musesemi.com/>