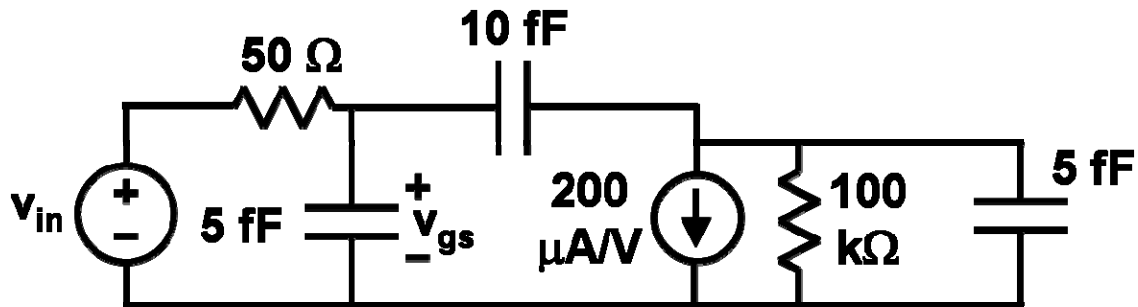


Name: _____

Lab Section: _____

Problem 1 (10 points) For the following small-signal model of a MOS amplifier, use the method of Zero-Value Time Constants (Open-Circuit Time Constants) to estimate the dominant pole location. Use the Miller Approximation to simplify your analysis. Show all work and express your final answer in Hz.

 $f_{\text{POLE}}\ (\text{Hz}) =$